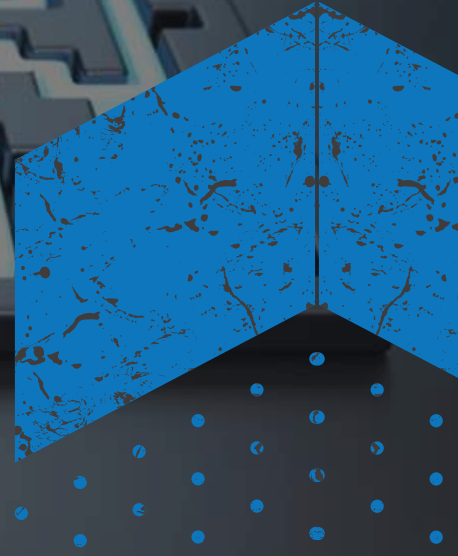




**IMMERSE ANALYTICS LLC**  
Immerse. Analyze. Deliver.

# Immerse | Analyze | Deliver

Immerse Analytics LLC (IA), an SBA 8(a) certified EDWOSB, delivers performance improvement services to enhance strategies, processes, and systems. Specializing in analytical, programmatic, and governance support, IA focuses on innovative solutions addressing People, Process, and Technology, helping clients adapt to changing mission environments.



**CAGE: 85FK9 | DUNS: 081212606**




**PRIMARY NAICS: 541611 | UEI: GXH9RG2M6BU5**

## NAICS CODES

- 541211
- **541611**
- 541618
- 541690
- 541910
- 611430
- 611710
- 523940
- 541613
- 561110
- 541990
- 561990
- 561312
- 561320



## WHY US

-  IA is agile, and able to pivot as business climates change. IA's focus is to stay on target and remain capable in fostering collaboration and solutions in the most challenging environments.
-  IA will always strive to do what is in our client's best interest and seek authorized deviations to policy requirements as needed.
-  IA immerses the potential of our personnel, resources, and capabilities to deliver high level advisory and technical assistance quickly and efficiently.

## Our Solutions

### Lifecycle Acquisition Support

We provide end-to-end lifecycle acquisition support, including requirements development, contracting, portfolio management, financial reporting, and workforce development for effective acquisition execution.

### Program Management Support

We deliver comprehensive program management support, including PMO development, strategic planning, policy creation, budgeting, and execution to ensure effective program execution and oversight.

### Issue Curation

We provide expert issue curation services, including identification, remediation, process modernization, training, and executive consulting to drive operational excellence.

### Ramp-Up Conceive Services

We provide contract ramp-up and recovery services, including CDRL development, staffing and training, and performance optimization, enabling successful program execution, improved retention, and stronger customer relationships.

### Trainings

We offer comprehensive training in lifecycle acquisition, program management, policy and governance development, change management, business system execution, and incorporation.



## DIA - Enterprise Acquisition Support

- Comprehensive Program Advisory Support Program Identification & Designation, Planning (PPBE/POM/CAPE), Acquisition Development, Governance Development & Compliance
- Program Management: Process Modeling, Life Cycle Execution and Sustainment, Need Assessments & Requirements Development, PMO Development & Workforce Alignment
- Performance Analysis and Training to drive data analytics, continuous improvement, high performance

## DIA - Contract Specialist Support

- Cradle to Grave Contracting Administration & Contract Closeout
- Contract Audit Recovery & Remediation Support
- Product and Service Life-cycle Services
- Program/COR/COTR Advisory Support



## DIA - Expert Cost Price Management Support

- Enterprise Forecast Development to Determine Price Trends & Future Costs
- Cost/price objective development for negotiations
- Audit and Contract Cost/price determinations
- Enterprise Cost Price Analysis Source Selection Support

## DIA - Expert Portfolio Management Support

- Financial Analysis to identify trends, forecasts, and compliance
- Capital planning and investment control (CPIC)
- Comparative Analysis: Cost-feasibility, cost-effectiveness, cost-benefit
- Actuarial services: Mathematical and Statistical Model Development



## NGA - Business Consulting Support

- Critical Business initiative development in program management, change management, and strategy development
- Business Analytics and Data Visualization
- Acquisition Artifact Development & Acquisition Design

## ODNI - Acquisition Support

- Acquisition Prototype Created for Agile Software Development for Future implementation across Defense Intelligence Enterprise (All Intelligence Agencies)
- Developed ODNI IC 800 Policy to align with the new acquisition model
- Coordinated Efforts with DoD to align the model with their software acquisition pathway, ensuring cross-agency compatibility and support
- Developed Compliance Process, including security/risk assessments & regular monitoring

